



RECIP #: 752826
 RECORDED 5/8/2019 AT 1:19 PM BK# 2620 PG# 1868
 Debra K. Lee, CLERK OF LARAMIE COUNTY, WY PAGE 1 OF 1

STATE OF WYOMING CORNER RECORD

(In compliance with the CORNER PERPETUATION AND FILING ACT, Wyoming Statutes, 1997 Section 33-29-140, et. seq., and the Rules and Regulations of the Board of Registrations for Professional Engineers and Professional Land Surveyors)

NORTHEAST CORNER SECTION 19, T. 18 N., R. 63 W., 6TH P.M., LARAMIE COUNTY, WYOMING

GLO: SET A SANDSTONE 18X6X4, 10 IN. DEEP, MARKED WITH 3 NOTCHES ON S. SIDE AND 5 NOTCHES ON E. SIDE FOR COR. TO SECS. 17, 18, 19, 20

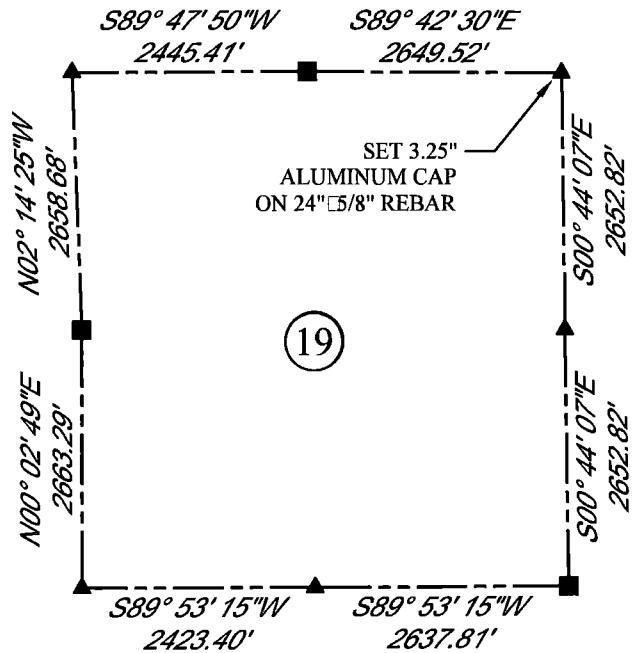
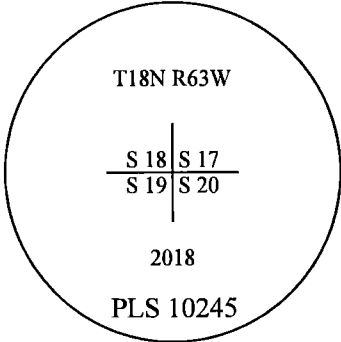
FOUND: NOTHING. SET ALUMINUM CAP AT PROPORTIONATE(DOUBLE) DISTANCE.



SCALE: NONE

NORTH DETERMINED BY
 G.P.S OBSERVATIONS

SET 3.25" ALUMINUM CAP ON #5 REBAR, 3" BELOW SURFACE, STAMPED AS SHOWN. SET 2 MAG NAILS IN FENCE POSTS, APPROXIMATELY 8.7' NORTHEASTERLY AND 24' SOUTHEASTERLY.



LEGEND:

- FOUND BLM CAP
- FOUND USFS CAP
- FOUND STONE
- FOUND PRIVATE MONUMENT
- ◆ CALCULATED POSITION
- ▲ SET MONUMENT (LS10245)
- SECTION LINE

DATE OF FIELD WORK: 9/24/2018 OFFICE REFERENCE: MERIDEN

CROSS INDEX DIAGRAM

A	1	2	3	4	5	6	7	8	9	10	11	12	13	14	15	16	17	18	19	20	21	22	23	24	25	A	
B																											B
C																											C
D																											D
E																											E
F																											F
G																											G
H																											H
J																											J
K																											K
L																											L
M																											M
N																											N
O																											O
P																											P
Q																											Q
R																											R
S																											S
T																											T
U																											U
V																											V
W																											W
X																											X
Y																											Y
Z																											Z

WOOD
 2615 AVIATION DRIVE
 SHERIDAN, WY 82801
 PH: 307-675-6400

THIS CORNER RECORD WAS
 PREPARED BY ME OR UNDER
 MY DIRECTION AND
 SUPERVISION,
 SEAL AND SIGNATURE

wood.

